

TRUSTED BY LEADING ORGANIZATIONS

Mission-Critical & Financial

AT&T • British Telecom • Capital One
Danske Bank • IBM • JP Morgan Chase
Morgan Stanley

Government & Infrastructure

GSA • Smithsonian • USACE • USAF • WMATA

Healthcare & Research

CMS • National Agricultural Library • NIH
PGC Health Department • VA

Utilities & Energy

Blue Cross Blue Shield • FirstEnergy
Lockheed Martin

INDUSTRIES SERVED

Transportation
Utilities
Healthcare
Education
Mission Critical
Research
Commercial Development

LET'S TALK RELIABILITY

Laurel, Maryland

301.210.9090
www.csie.com

Ari Ghosal

President
202.262.1860
aghosal@csie.com

John Colen, RA

Executive Vice President
Mission Critical Designs
202.817.9125
jcolen@csie.com

Bernie Leipold

Business Development
443.605.3296
bernie@csie.com

Your infrastructure supports everything that matters. We make sure it never fails.

The logo for CSIE, with 'CS' in white and 'IE' in orange, set against a background of a server room aisle with blue lighting and server racks.

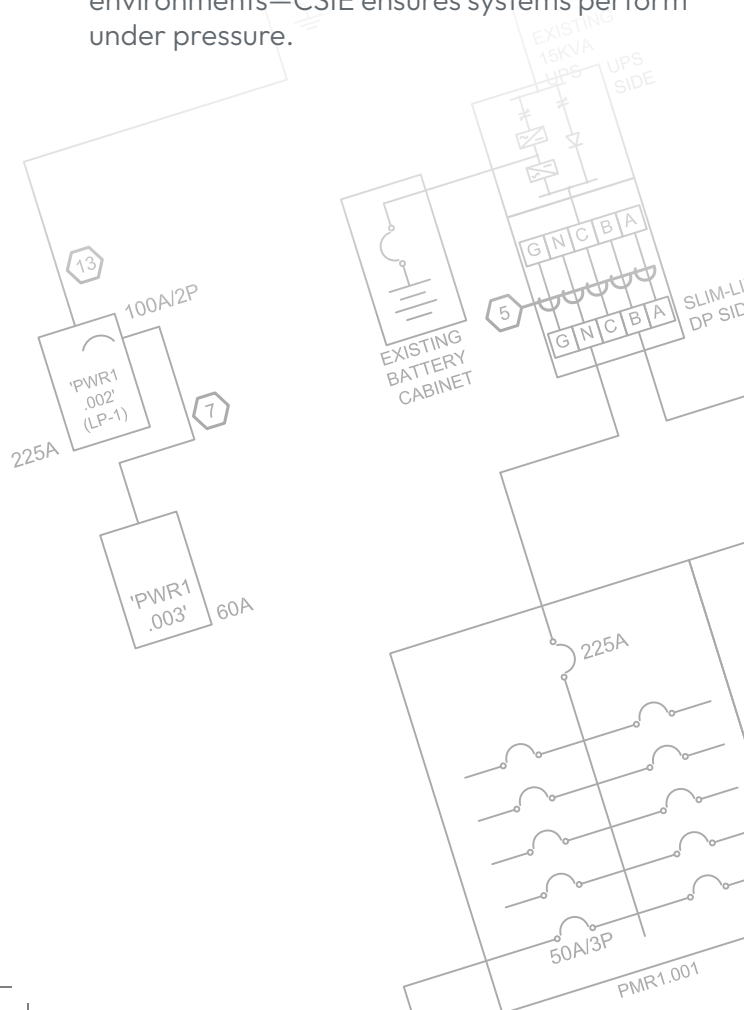
Concept to Execution
Engineered to Perform

BUILT FOR COMPLEXITY. DESIGNED FOR PERFORMANCE.

CSI Engineering (CSIE) is a professionally managed MEP engineering firm serving the Mid-Atlantic and beyond.

We specialize in mission-critical infrastructure, delivering engineering design, consulting, and staffing solutions for environments where failure is not an option.

From data centers to transportation systems, healthcare facilities to secure government environments—CSIE ensures systems perform under pressure.



CORE CAPABILITIES

Electrical Engineering

- Power distribution, backup and standby systems
- Arc flash analysis, fault studies, system assessments
- Mission-critical power infrastructure and redundancy

Mechanical Engineering

- HVAC systems, central plants, and thermal management
- Cooling strategies for high-density environments
- Airflow optimization, heat dissipation, and energy efficiency

Plumbing

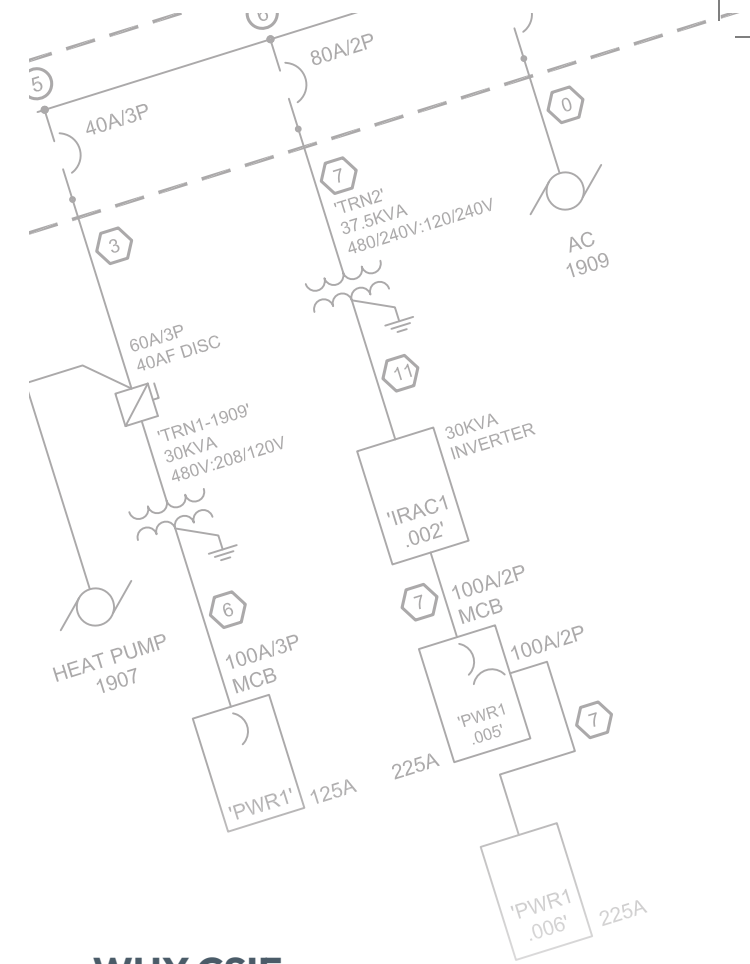
- Water systems, drainage, and infrastructure support
- Code-compliant design for commercial and critical facilities

Mission-Critical Consulting

- Integrated electrical, mechanical, environmental solutions
- Mission-critical lifecycle consulting and support
- High-impact performance and efficiency optimization

Staff Augmentation

- Engineers and CAD staff
- BIM and REVIT professionals
- CA, QA, and other related administrative professionals



WHY CSIE

- Licensed Professional Engineers across multiple states
- 38 years supporting federal, commercial, and institutional clients
- Proven delivery across multi-site, multi-phase, complex projects
- Designed one of the world's first Tier IV data centers
- Deep experience in mission-critical environments
- Certified small and minority-owned business

We don't just design systems—we engineer reliability.